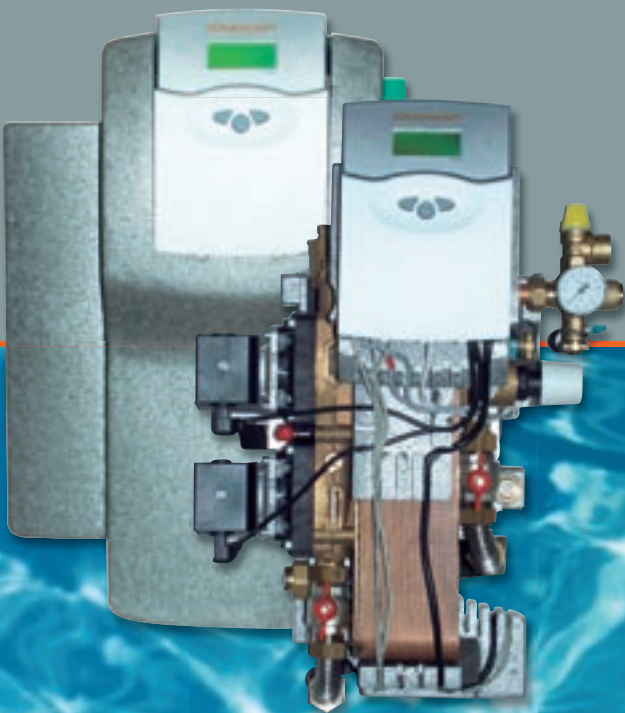


SONNENKRAFT®

Stratified charging module

SLM50 stratified charging module

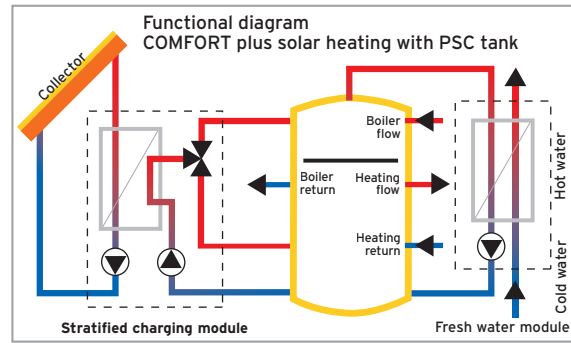


SLM50 stratified charging module

The SLM50 stratified charging module is the central power supply of the COMFORT plus system solution. Together with the PSC backup tank, the FWM35 fresh water module and the HKM heating loop module, SONNENKRAFT sets a new standard for plug and flow and complete solar heating systems!

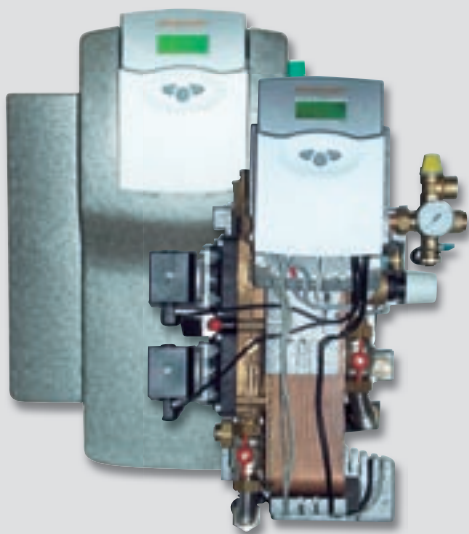
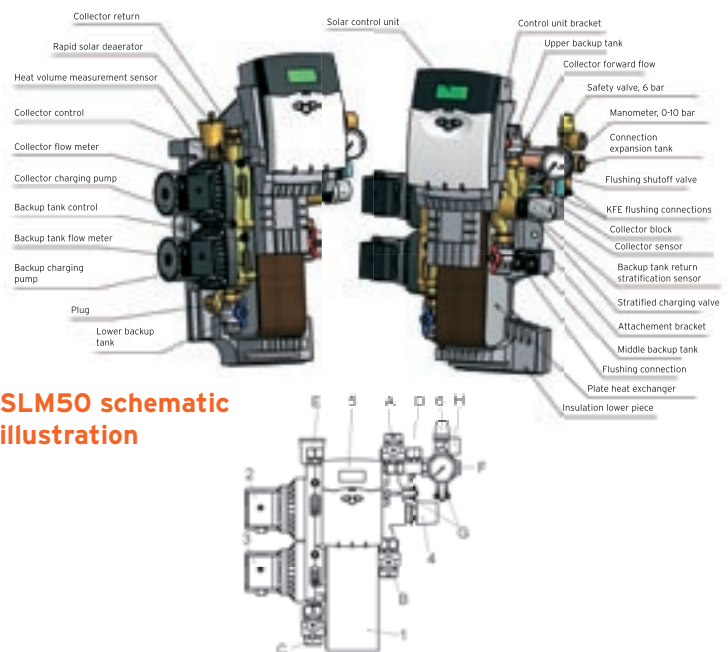
SLM50 specifications

Dimensions	Width: 400 mm Height: 600 mm Depth: 280 mm
Insulation	EPP, grey
Weight	17 kg
Piping	Solar: Gunmetal, modular construction Backup water: Gunmetal, modular construction
Max. permitted operating pressure	6 bar
Min. permitted operating temp.	2 °C
Max. permitted operating temp.	95 °C
Pump specifications	Primary pump (solar loop) HU25/6: 230 V / 50 Hz Speed n = 2200 1/min Nominal capacity P2 = 37 W Power consumption P1 = 98 W Current I = 0,41 A Secondary pump (backup tank charger) HU25/6: 230 V / 50 Hz Speed n = 2200 1/min Nominal capacity P2 = 37 W Power consumption P1 = 98 W Current I = 0,41 A
Connections	A = upper backup charger (hot), 1" male thread B = centre backup charger (hot), 1" male thread C = lower backup charger (return, cold), 1" male thread D = solar forward flow (from collector), 22 mm Cu E = solar return flow (to collector), 22 mm Cu F = solar expansion tank, 3/4" female thread G = 2 x solar fill up, 3/4" male thread H = safety valve - blow out lead, 3/4" female thread
Main components	1 = plate heat exchanger 2 = primary pump (solar loop) 3 = secondary pump (backup tanks charger pump) 4 = three-way distributor valve 5 = regulator 6 = safety valve



Operation of SLM50 stratified charging module

The stratified charging module is designed for stratified charging of a backup storage tank and uses a solar energy system operating in matched flow mode. The unit is modular on both the solar and backup tank side and pre-assembled. The integrated SONNENKRAFT control system controls interaction between the collector pump and the backup tank charging pump in accordance with radiation influx. Electric and hydraulic systems for the module are prefitted and ready for connection.



Features of SLM50 stratified charging module

- Maximum performance with pump speed control, stratified charging and high-performance heat exchanger
- Premium external coating for all backup tanks
- High quality due to maintenance-free high-tech components
- Ideal for hygienic water heating in continuous flow principle combined with FWM35 fresh water module
- Complete solar heating system with plug and flow connection HKM heating loop module incl. SKSCHK1 heating loop controller
- Minimum space requirement thanks to modular design (without internal pipelines) and single storage tank system
- Simple plug and flow hydraulic and electrical installation on PSC backup tank
- Simple commissioning process with preset controls, just plug and flow