

SONNENKRAFT.

Fresh water module

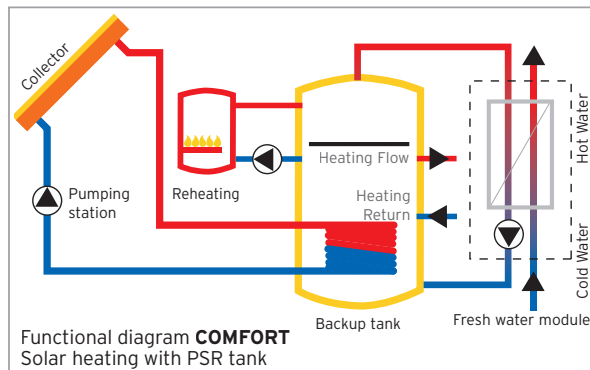
Fresh water module FWM35



Fresh water module FWM35

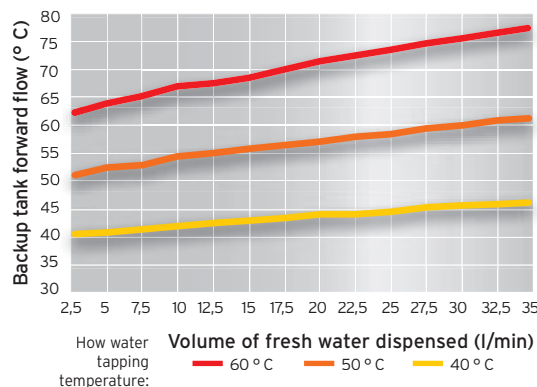
Fresh water from the sun. The improved fresh water module FWM35 with patented temperature regulation is the best solution for heating water in continuous flow – now with even more advantages - Compact and ready to “plug and flow”.

Specifications FWM35	
Dimensions including insulation	width: 337mm height: 572mm depth: 276mm
Cover	EPP, grey
Weight	19kg
Connections	A = cold water IN, 1" female thread B = warm water OUT, 1" female thread C = from backup tank, 1" male thread D = to backup tank, 1" male thread E = circulation, 1/2" female thread
Main components	1 = universal block (cold) incl. non return valve 2 = universal block (warm) incl. pump, flow switch and patented temperature regulating unit 3 = universal block (circulation connection) incl. deaeration and 4 = dummy cap connection (push-in) 5 = optional circulation pump unit with pump, electronic return flow thermostat and time switch 6 = plate heat exchanger
Capacity	1.5 - 35 l/min hot water
NL	3.0
Min. permissible operating temp.	2 °C
Max. permissible operating temp.	95 °C
Max. permissible operating press.	service water 10bar heating 3bar
Pump specifications	charging pump: 230V / 50Hz speed = 2200rpm power consumption: 93W nominal current = 0.40A circulation pump (optional): 230V / 50Hz power consumption: 25W nominal current = 0.1A



Operation of Fresh water module FWM35

The FWM35 fresh water module operates according to the flow-through principle and ensures fresh hot water and minimum stand-by loss. Heating water is fed from the backup storage tank. The circulation pump conveys the heating water through the two-pass heat exchanger via a patented temperature regulating unit. Using a patented procedure, the temperature regulating unit mixes the backup water temperature into the heat exchanger supply so that the preset hot water temperature is reached.



Schematic diagram FWM35

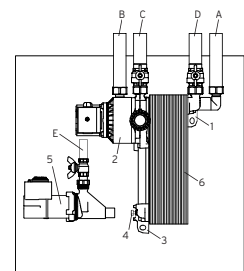
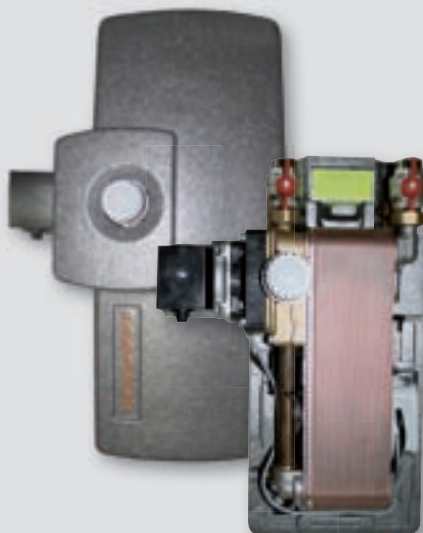


Diagram applies for 10 °C cold water and max. 22 °C backup tank return temperature.



Features of Fresh water module FWM35

Minimum space take-up: Smallest modular construction possible, no internal piping, hydraulic and electric “plug and flow” installation possible directly at the buffer tank PSC

Increased hygiene: The continuous flow ensure 100% fresh service water and prevents Legionella from forming

Greater convenience:

- Heat insulated design and automatic system ventilation
- Patented temperature regulation with simple hot water temperature preselection for:
 - constant hot water temperatures
 - rapid reaction times without over- or undershooting the preset dispensing temperature

Lifespan:

- High-quality due to maintenance-free components such as pressed brass blocks and stainless steel plate heat exchangers

Features of FWMZP circulation pump

Greater convenience: instantly available service water - no need for waiting:

- smallest modular construction possible without internal piping
- high-quality, heat insulated design
- “plug and play” push-in connection to FWM35 - hydraulic and electric

Note: Two FWM35 modules can be connected in parallel for higher hot water requirements!

Operation of service water circulation set FWMZP

The service water circulation set adds a circulation pump to the FWM35.

This is designed to operate in two different modes:

1. **Timer mode** - circulation is turned on by timer switch then off again using a return flow thermostat.
2. **Impulse mode** - circulation is turned on when water tap is turned, then switched off again by a return flow thermostat to help conserve energy.